

GRAPHENE TUBE®

The new structure of CNT

Characteristics of GRAPHENE TUBE®

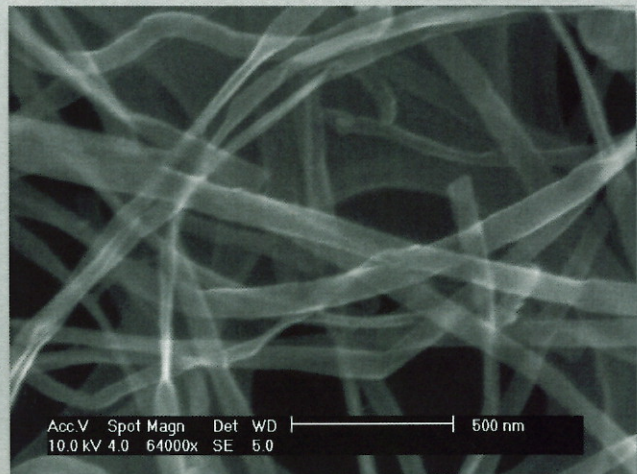
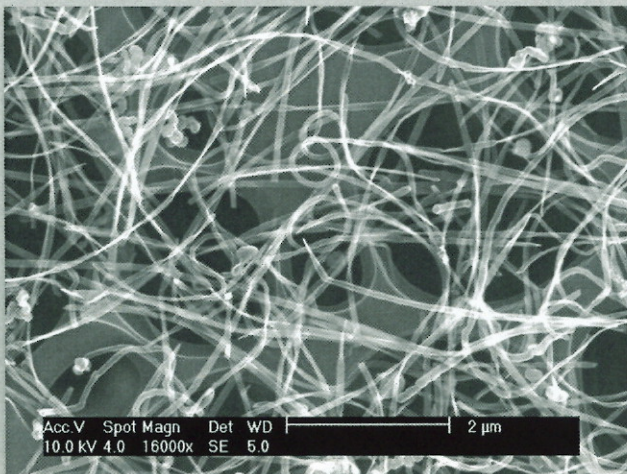
- Thin strip and tube shape
- Thin wall and thick diameter
- Highly ordered crystalline . High purity.
- Wide tube internal space
- Improved Bundle-like aggregate

Application of GRAPHENE TUBE®

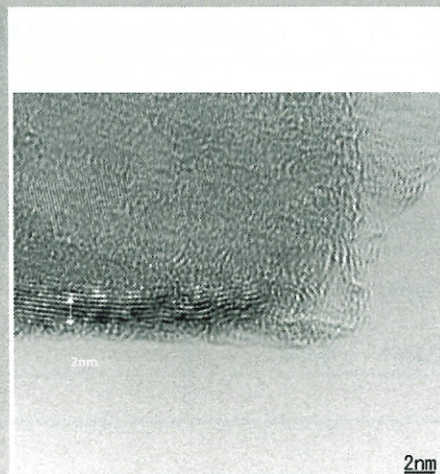
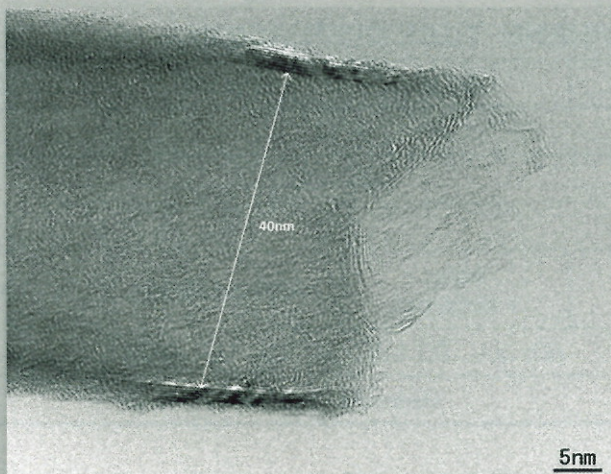
- Flexible transparent conductive film
- Raw materials for Printed Electronics
- Filler for conductive materials
- Additives for batteries electrode
- DDS (Drug Delivery System)



GRAPHENE TUBE DISPERSION

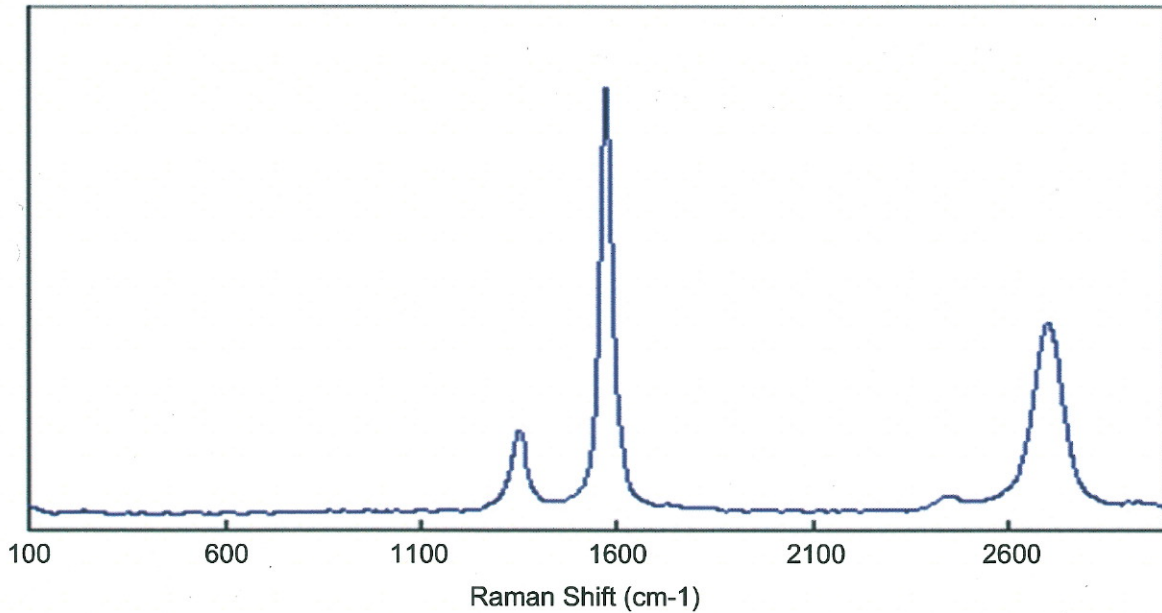


FE-SEM of GRAPHENE TUBE

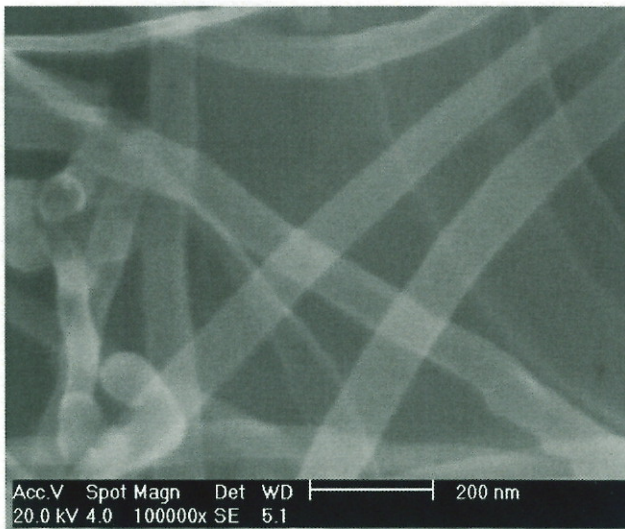


Cross section of GRAPHENE TUBE

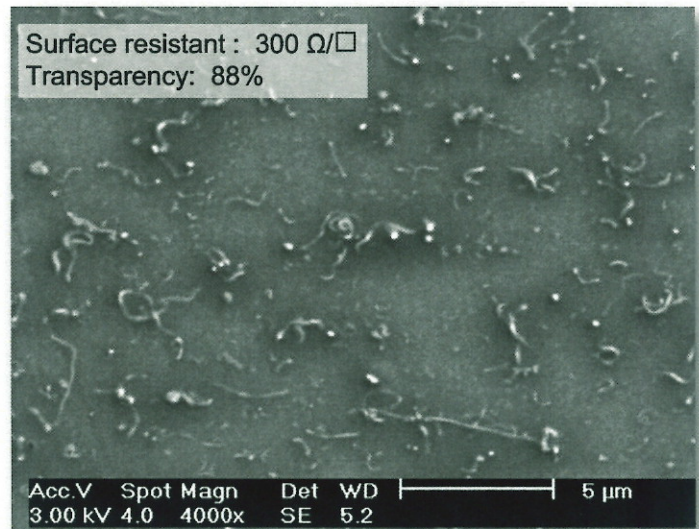
GRAPHENE TUBE®



Raman spectroscopy of GRAPHENE TUBE



Conductive path without binder



Conductive path with binder on PET film

Products of GRAPHENE TUBE DISPERSION

CODE	GT3 IPA	GT3 W	GT3 ME	GT3 NP
Tube length (μm)	~ 10			
Tube width (nm)	30 ~ 100			
Carbon purity (wt%)	99			
Solvent type	IPA	Water + surfactant	2-Methoxyethanol	NMP
Concentration (mg/ml)	D2: 0.1, D3: 0.5, D4: 1.0, DS: option			
Volume	Minimum 100 ml			